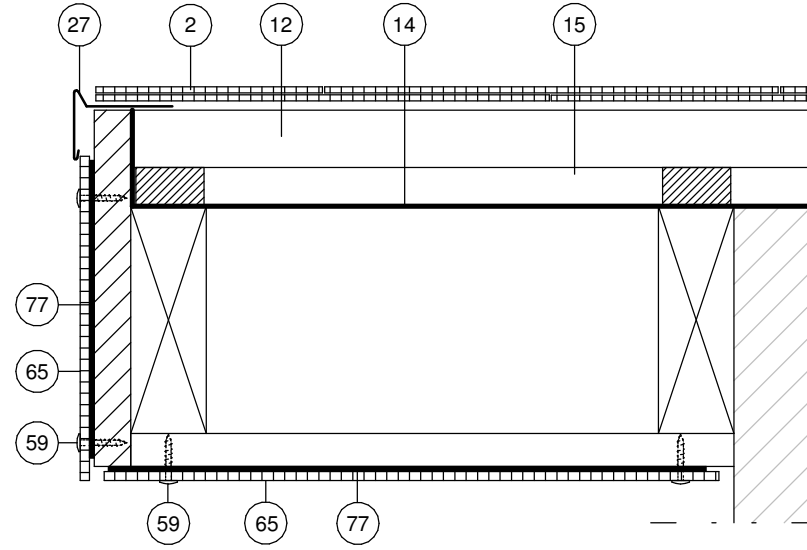
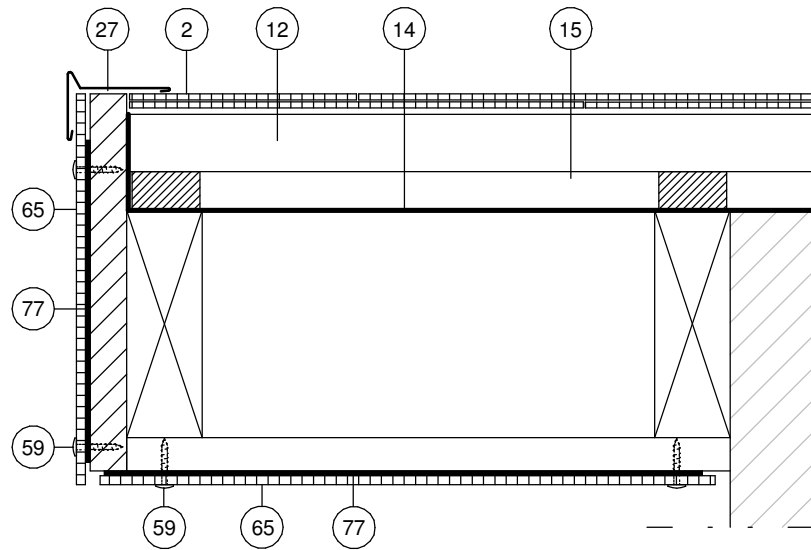
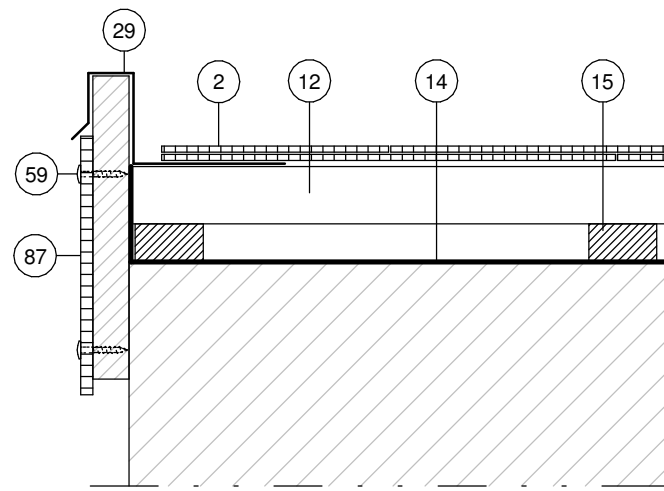
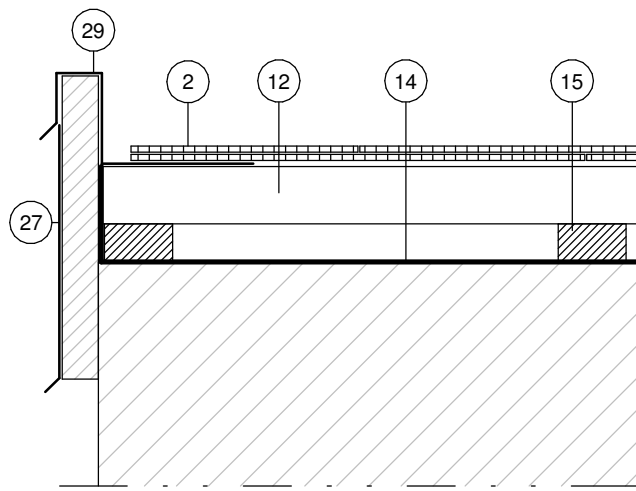
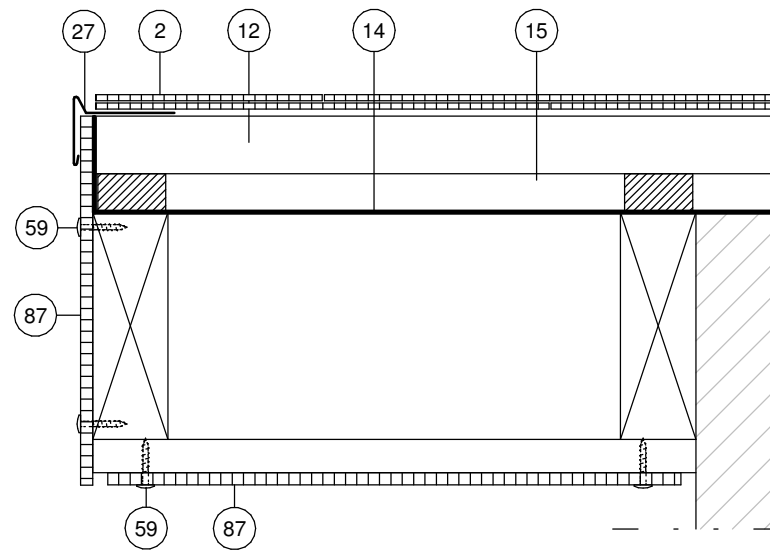
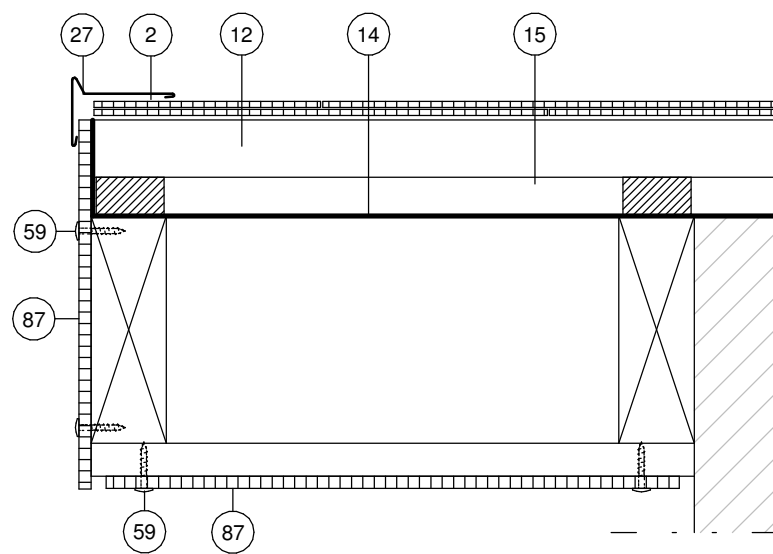


# Gavlløsninger

Drawing No. 252-03



## Cembrit Planker & Paneler



- |     |  |  |
|-----|--|--|
| 2)  | Eternit<br>Farver:<br>Format:<br>Pladetykkelse:<br>Montagehøjde:<br>Montagebredde:<br>Minimum taghældning: | Skifer<br>Sortblå/Skifergrå<br>300x600<br>4 mm<br>15 mm<br>303 mm<br>18° |
| 12) | C18 Taglægge   | 38x73 mm   |
| 14) | Undertag<br><br>30x60 skifer<br>Taghældning: 18-34°<br>Taghældning: > 34°                                  | Undertag<br>Undertag eller kit<br><br>Undertag                           |
| 15) | Afstandsliste<br>Trykimprægneret iht. NTR-klasse AB  | 25x45 mm   |
| 27) | Afdækningsprofil   | (Forhandles ikke hos Cembrit)  |
| 29) | Vindskede  | (Forhandles ikke hos Cembrit)  |
| 59) | Cembrit Facadeskrue<br>Rustfri stål (A2)   | 4,5x30 mm  |
| 65) | Patina plader eller brædder  | 6 mm eller 8 mm  |
| 77) | EPDE gummliste<br>Ruller á 30 m  | 3x90 mm  |
| 87) | Cembrit Paneler  | 8 mm   |

Cembrit Paneler kan monteres uventileret op til 400 mm pladebredde. Ved sådan en montering kræves det, at bagsiden males.

Subject Gavlløsninger					
Date 01/09-2009	Scale 1 : 5	Rev. 01/03-2018	Init. SNM	Approved FBR	
Draming No. 252-03					